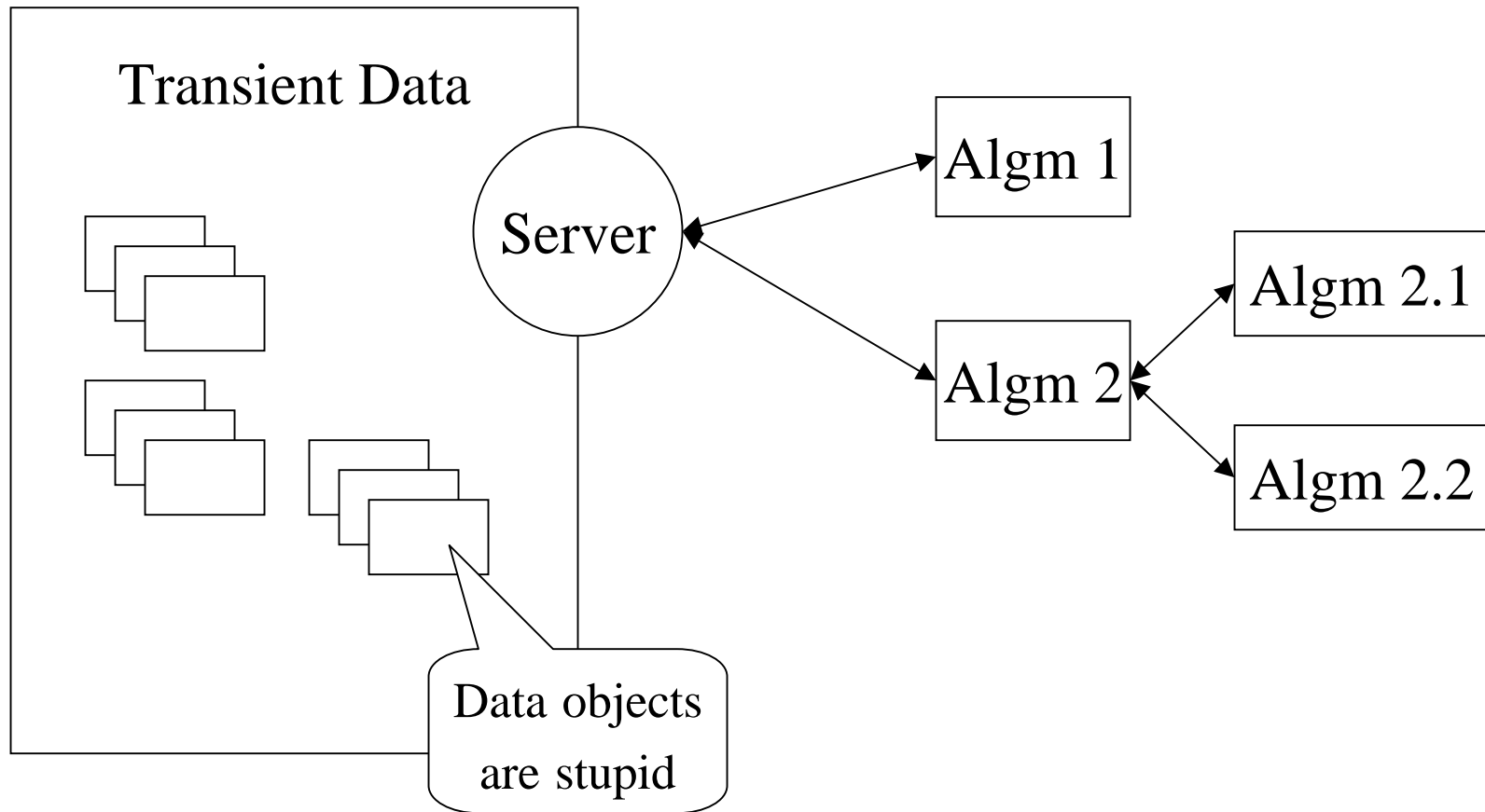


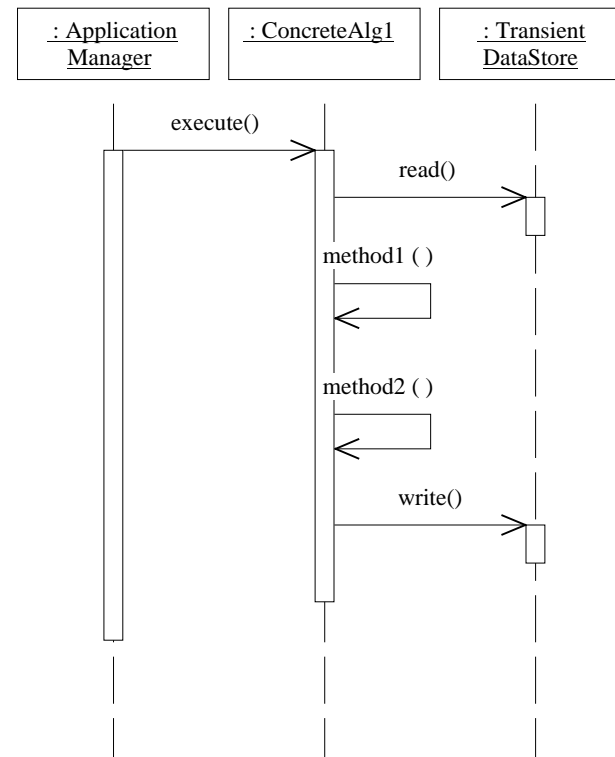
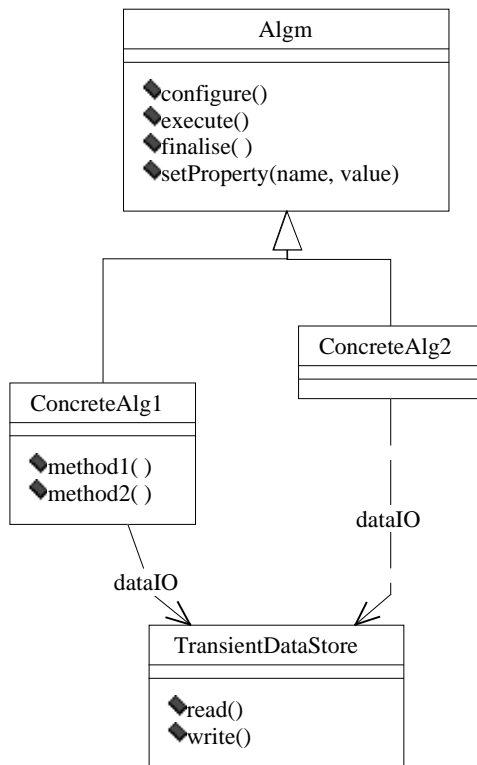
“Algorithm”

- Standardised container for a computation
 - Standard interface for a user
 - Run-time selection of code
 - Setting of options
 - Standard services for a developer
 - Access to transient data store
 - Histogram / Persistency services
 - Messaging / error handling
 - Separation of components

Common block and subroutines



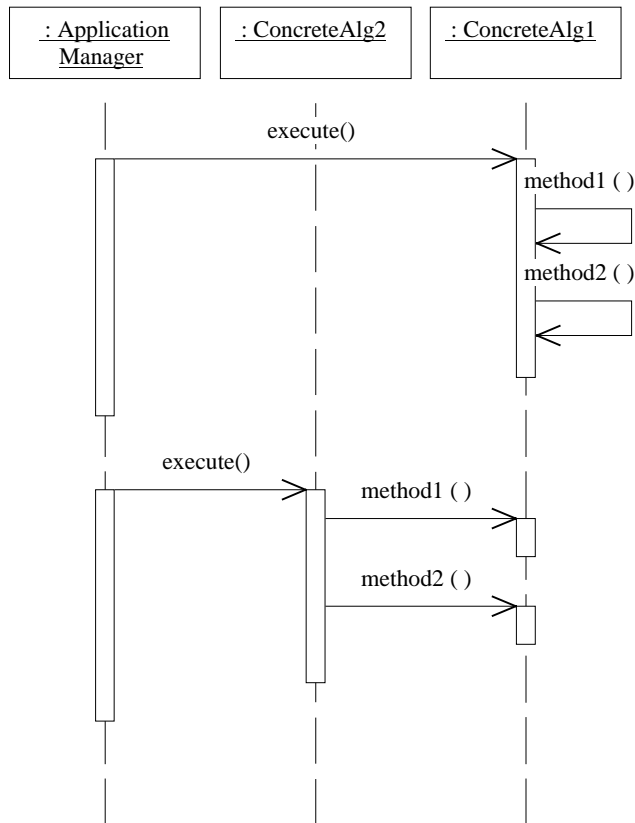
Concrete algorithms



Issues

- “execute()” deals with:
 - all data of a particular type in an event
 - Smaller chunks of data
- Nesting via:
 - base interface
 - algorithm Specific interface

Standard / Specific



Use of standard interface during development

Closer coupling by using more specific algorithm interfaces